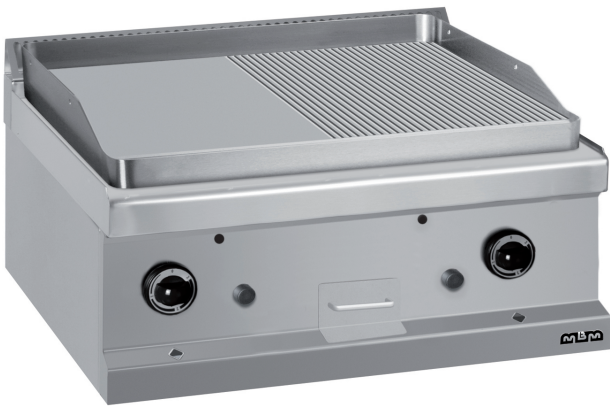




MAGISTRA 700 - FRY TOP  
**MG7GFT777LR**



1/2 SMOOTH 1/2 RIBBED PLATE GAS  
TOP

**TECHNICAL DATA:**

Chromed plate	<input type="radio"/>
Lined plate	<input checked="" type="radio"/>
Smooth plate	<input type="radio"/>
External dimensions - WxDxH (cm)	70x70x25
Total power (kW)	5.5+5.5=11

**ADDITIONAL TECHNICAL DATA:**

Nr. Burners 5.5 kW	2
Weight (kg)	75
Volume (m3)	0,32

The worktop is AISI 304 18/10 stainless steel with thickness of 1 mm. The backsplash, in AISI 304 stainless steel of 3 mm thickness, is welded to the cooking surface for greater ease of use and cleaning. The cooking plate has a thickness of 15 mm and a slight tilt to facilitate cleaning operations and discharge of grease into a removable stainless steel basin with capacity up to 2 liters. In full modules differentiated cooking can be done with two independently-heating electric burners/elements. Gas versions: stainless steel burners with self-stabilizing flame and thermostatic temperature control for a quick recovery of the temperature set. Pilot flame with thermocouple safety control. Piezo-electric burner ignition. Electric versions: armoured stainless steel electric heating elements; thermostatic temperature control.

