



DÖNER GRILL

MODEL: 1 BURNER - GAS



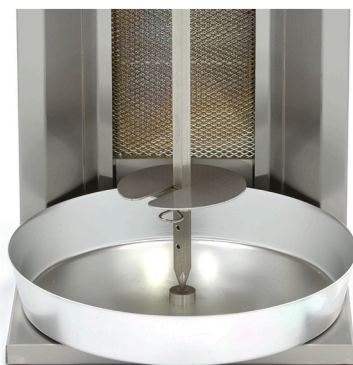
SPECIFICATIONS

Power	3.32 kW
Connection	230V / 50Hz / 1phase
Nett Weight	12.0 Kg
Gross Weight	17.0 Kg
Machine Dimensions	H440 x W380 x D370 mm
Packaging Dimensions	H540 x W480 x D470 mm
Packaging Volume	0.12 CBM
Packaging Material	Carton Box with Foam
HS Customs Code	8419818090
EAN Code	8719632124702
Article Number	09370200

Professional grill for Döner / Gyros / Kebab
Equipped with 1 gas burner
Stainless steel protective mesh (AISI 310)
Equipped with stainless steel drip tray
Housing, skewer and meat plate made of stainless steel
The meat skewer must be turned manually
Skewer can rotate left and right
Skewer is adjustable
Easy to clean
Max. capacity: 10 kg meat
Diameter meat plate: 120 mm
Dimensions skewer: 12 x 12 mm
Skewer length: 300 mm
Gas consumption: 0.262 m³/h

- 👑 HIGH QUALITY / LOW PRICES
- 👑 24 / 7 SUPPORT & SERVICE
- 👑 IMMEDIATELY AVAILABLE FROM STOCK
- 👑 TECHNICAL DEPARTMENT & WARRANTY
- 👑 EXCELLENT CUSTOMER SATISFACTION

CE



Stainless steel doner grill equipped with drip tray



With adjustable skewer for perfect preparation.



Easy to dismantle and clean