

Dimensions:

800 mm (w) x 700 mm (p) x 850 mm (a)

Grilling area / Zone de grillade:

623 mm x 537 mm

Weight / Poids: 147,5 kg

Thermal Flow / Débit thermique: 21 kw

Type: A

Category / Catégorie: II_{2H3+}

Voltage / Tension: 230 V

Electric Power / Puissance électrique: 0,6 w

Butane gas / Gaz butane

Pressure / Pression - 28-30 mbar

Consumption / Consommation - 1,6 kg/h

Propane gas / Gaz propane

Pressure / Pression - 37 mbar

Consumption / Consommation - 1,6 kg/h

Natural gas / Gaz naturel

Pressure / Pression - 20 mbar

Consumption / Consommation - 2,3 m³/h

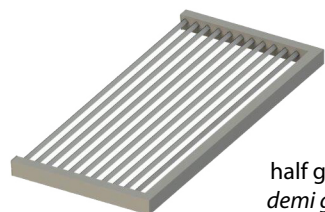
Built in available / Disponible pour l'intégration



support with extra grids, high ajustable
support avec grilles extra, réglable en hauteur



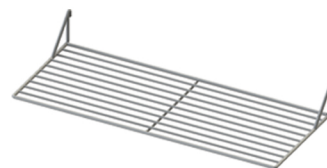
with water inlet and outlet
avec arrivée et sortie d'eau



half grid
demi grill



scraper
grattoir



extra grid
extra grill



support grids
porte-grille



Pack

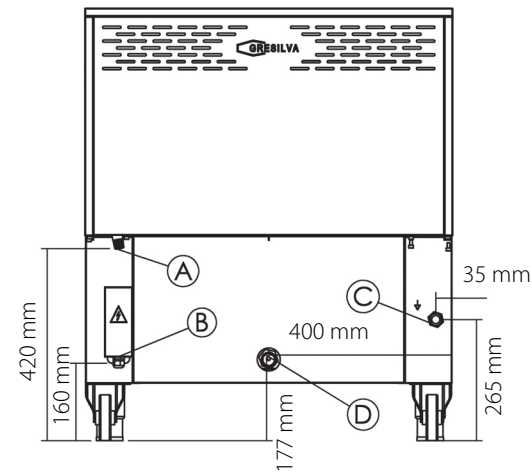
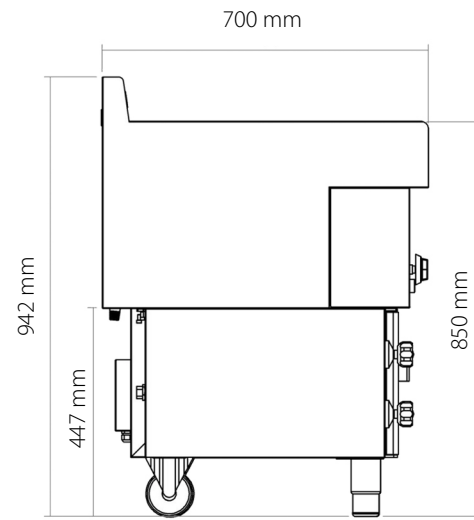
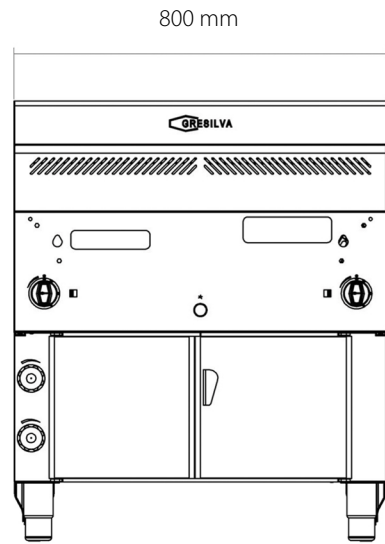


Line | Ligne **7**

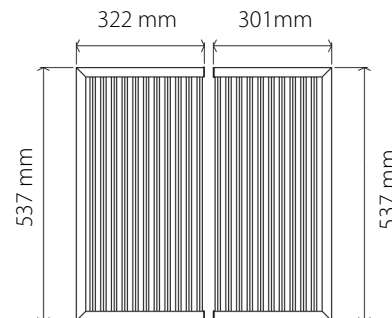
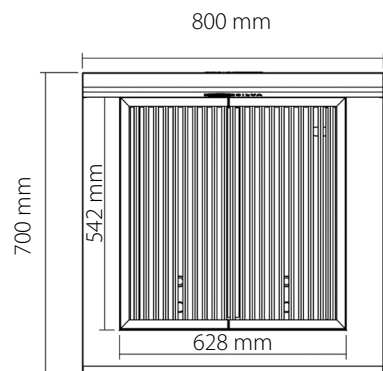
Horizontal Grill | Gril Horizontal
mod GHPI **7/800**



www.gresilva.com



- A - gas inlet 1/2"
- A - entrée de gaz 1/2"
- B - power cord output
- B - sortie du cordon d'alimentation
- C - water inlet 3/4"
- C - arrivée d'eau 3/4"
- D - wastewater outlet 1"
- D - sortie des eaux usées 1"



protective plate for ceramic tiles
plaque de protection pour carreaux de céramique

