

**Dimension/Dimensions:**

735 mm (c) x 1264 mm (p) x 1540 mm (a)

**N° grates/N° grilles:** 5

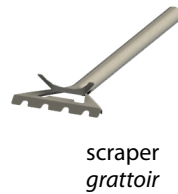
**Capacity chickens/Capacité poulet:** 9

**Weight/Poids:** 179 kg

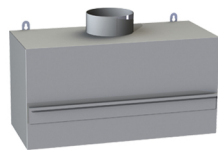
**Rated power / Puissance nominale:** 10,4 kw

(hourly consumption) / (consommation heure)

| Rated voltage<br>Tension nominale | Rated current<br>Courante nominale |          |          |
|-----------------------------------|------------------------------------|----------|----------|
| 400V 3N~                          | 16A (L1)                           | 16A (L2) | 11A (L3) |
| 230V 1N~                          | 45A (L1)                           |          |          |



scraper  
grattoir



module with filter  
module avec filtre



conduct  
conduita



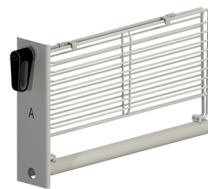
gutter  
gouttière



grid XS (8 mm)  
grille XS (8 mm)



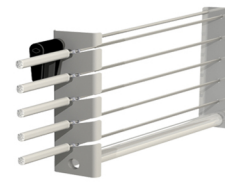
grid S (19 mm)  
grille S (19 mm)



grid XL (31 mm)  
grille XL (31 mm)  
standard



grid XXL (42 mm)  
grille XXL (42 mm)



grid with 5 skewers  
griller avec 5 brochettes



Timers let you control the cooking time of each grid individually. It gives the operator a warning beep signal, but it does not switch off.

*Minuteur individuel qui permet de contrôler indépendamment le temps de cuisson de chaque tiroirs. Avertie l'utilisateur à travers un signal sonore, sans couper l'alimentation du tiroir.*



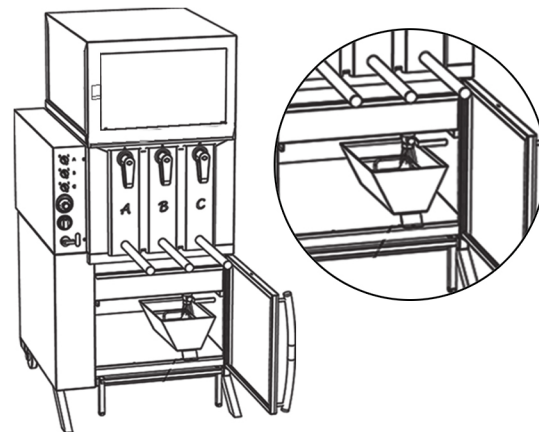
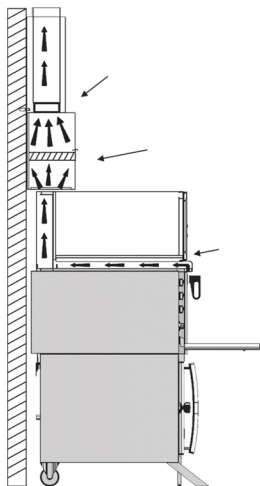
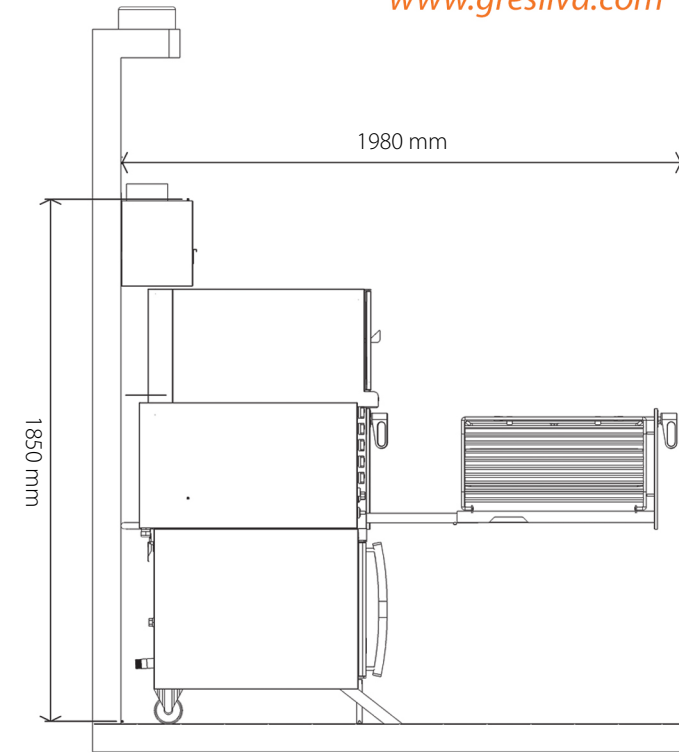
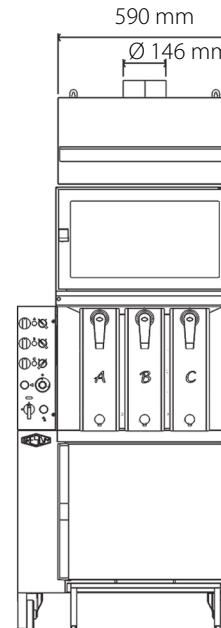
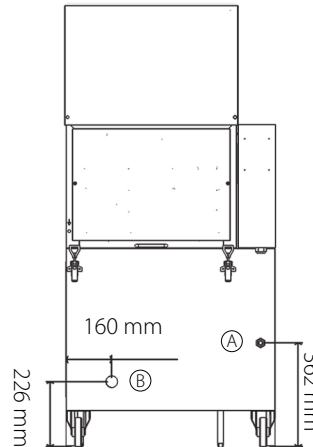
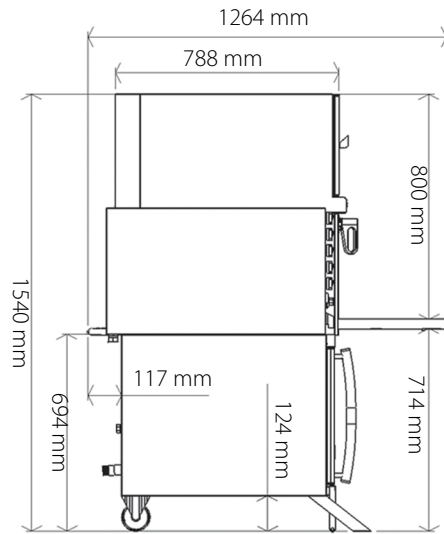
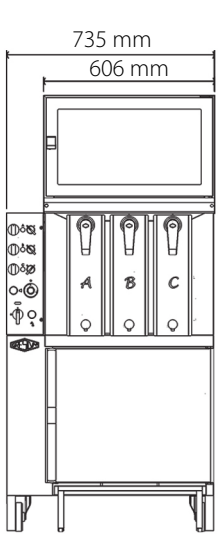
Line | Ligne



Vertical Grill | Gril Vertical  
mod **GV3**



[www.gresilva.com](http://www.gresilva.com)



- A** - water inlet 3/4" | arrivée d'eau 3/4"
- B** - wastewater outlet 1" | sortie des eaux usées 1"

A composite drainage system by a water collection container of the receiver drawer to be connected to the grease box

*Un système d'écoulement constitué d'un conteneur de collect d'eau à partir du tiroir récepteur à connecter à la boîte de graisses*



Commercial Cooking Appliance  
E357347