

BCCS-4
BCCS-6
BCCS-8

BCS-4
BCS-6
BCS-8

BPCS-4
BPCS-6
BPCS-8

BPS-4
BPS-6
BPS-8

Cubetas GN incluidas en el precio - GN containers included in price

ref.	largo length (mm)	alto height (mm)	fondo depth (mm)	base platos dish area (mm)	GN 1/3-40	potencia frig. frig. power (W)	consumo consumption (W)	tensión monofásica single phase voltage	refrigerante refrigerant
BCCS-4	1050	255	410		4	160	260	230 V- 50 Hz	R-134a
BCCS-6	1400	255	410		6	190	280	230 V- 50 Hz	R-134a
BCCS-8	1755	255	410		8	210	300	230 V- 50 Hz	R-134a
BCS-4	1050	255	410	300 x 675		160	260	230 V- 50 Hz	R-134a
BCS-6	1400	255	410	300 x 1030		190	280	230 V- 50 Hz	R-134a
BCS-8	1755	255	410	300 x 1380		210	300	230 V- 50 Hz	R-134a
BPCS-4	1050	315	410		4	160	260	230 V- 50 Hz	R-134a
BPCS-6	1400	315	410		6	190	280	230 V- 50 Hz	R-134a
BPCS-8	1775	315	410		8	210	300	230 V- 50 Hz	R-134a
BPS-4	1050	315	410	300 x 675		160	260	230 V- 50 Hz	R-134a
BPS-6	1400	315	415	300 x 1030		190	280	230 V- 50 Hz	R-134a
BPS-8	1775	315	415	300 x 1380		210	300	230 V- 50 Hz	R-134a
BCCS-4	1050	255	410		4	190	138	230 V- 50 Hz	R290*
BCCS-6	1400	255	410		6	190	146	230 V- 50 Hz	R290*
BCCS-8	1755	255	410		8	190	152	230 V- 50 Hz	R290*
BCS-4	1050	255	410	300 x 675		190	138	230 V- 50 Hz	R290*
BCS-6	1400	255	410	300 x 1030		190	146	230 V- 50 Hz	R290*
BCS-8	1755	255	410	300 x 1380		190	152	230 V- 50 Hz	R290*
BPCS-4	1050	315	410		4	190	138	230 V- 50 Hz	R290*
BPCS-6	1400	315	410		6	190	146	230 V- 50 Hz	R290*
BPCS-8	1775	315	410		8	190	152	230 V- 50 Hz	R290*
BPS-4	1050	315	410	300 x 675		190	138	230 V- 50 Hz	R290*
BPS-6	1400	315	415	300 x 1030		190	146	230 V- 50 Hz	R-134a
BPS-8	1775	315	415	300 x 1380		190	152	230 V- 50 Hz	R-134a

\*opcional - optional

Características técnicas y constructivas sujetas a variación sin previo aviso.

- Exterior en acero inox AISI-304 18/10
- Fondo interior embutido en acero inox AISI 304 18/10
- Cristal curvo o plano templado y securizado
- Puertas transparentes correderas
- Aislamiento de poliuretano inyectado, densidad 40 Kg/m<sup>3</sup>, cero efectos ODP y GWP
- Reguladores de altura
- Iluminación interior por LEDS
- Unidad condensadora ventilada
- Ajuste de temperatura y descarche por control electrónico digital
- Temperatura de trabajo 0° +6° a 32°C de ambiente

BCCS - BPCS Bandeja interior embutida, preparada para cubetas GN1/3-40 (incluidas)

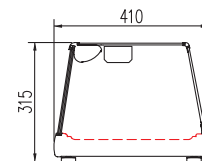
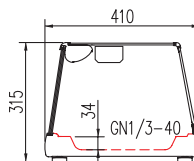
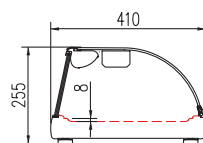
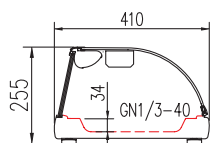
BCS - BPS Bandeja interior embutida, preparada para platos (no incluidos)

We reserve the right to change specifications without prior notice.

- AISI-304 18/10 stainless steel exterior
- AISI-304 18/10 stainless steel stamped bottom
- Toughened safety glass
- Transparent sliding doors
- 40 Kg/m<sup>3</sup> density polyurethane insulation, zero ODP and GWP
- Adjustable supports
- Interior LEDS lighting
- Fan assisted condenser unit
- Temperature and defrost sets by digital electronic control
- Operating temperature 0° +6°, 32°C ambient

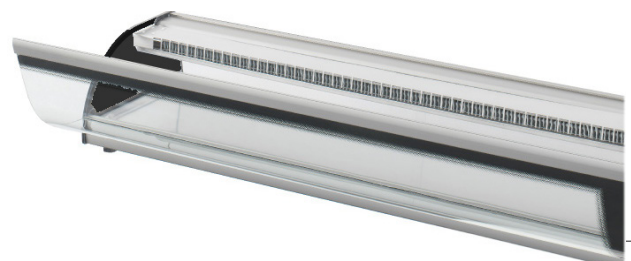
BCCS - BPCS, stamped steel bottom, GN 1/3-40 containers capacity (included)

BCS - BPS stamped steel (not GN capacity)

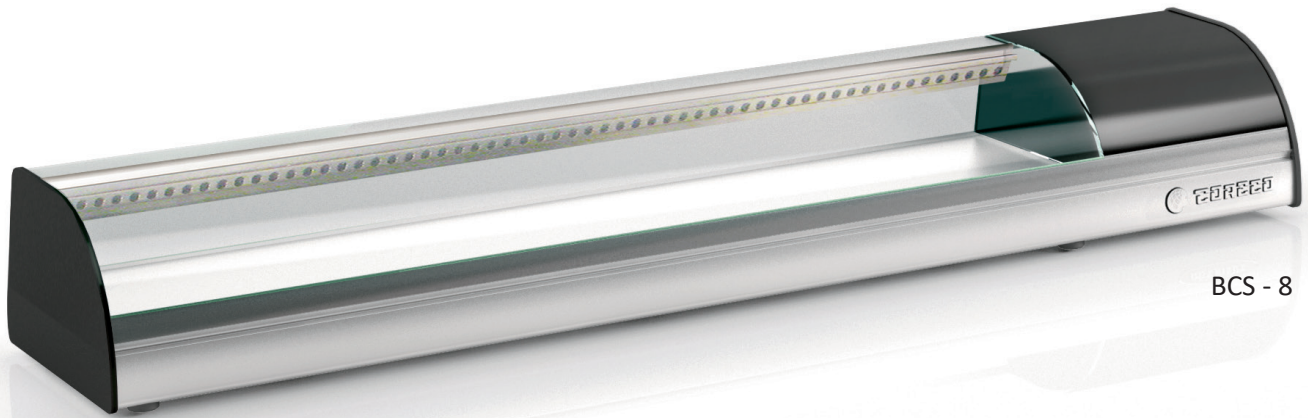


## Opciones - Options

230v 60Hz / 115v 60Hz      consultar - consult



all photos must be considered as a reference - fotografías no contractuales



BCS - 8

